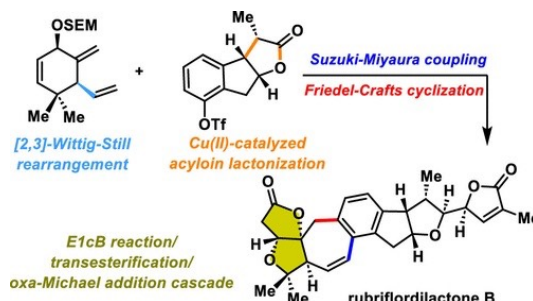


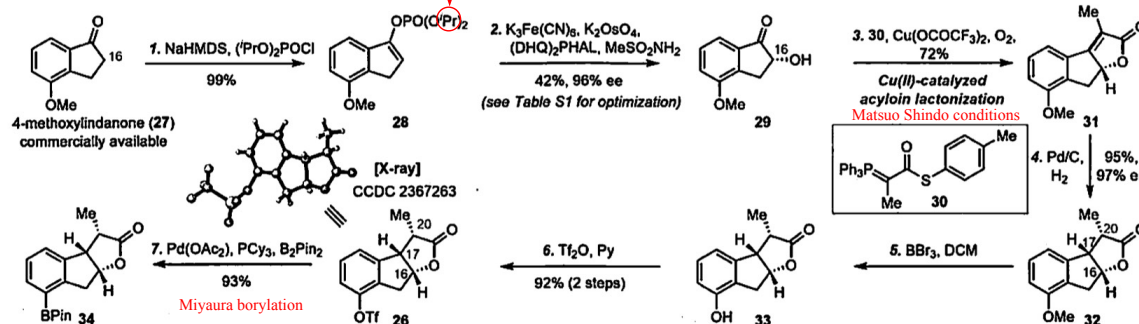
Schisandra bisnortriterpenoid

a E1cB reaction/transesterification/oxa-Michael addition (TOMA) cascade

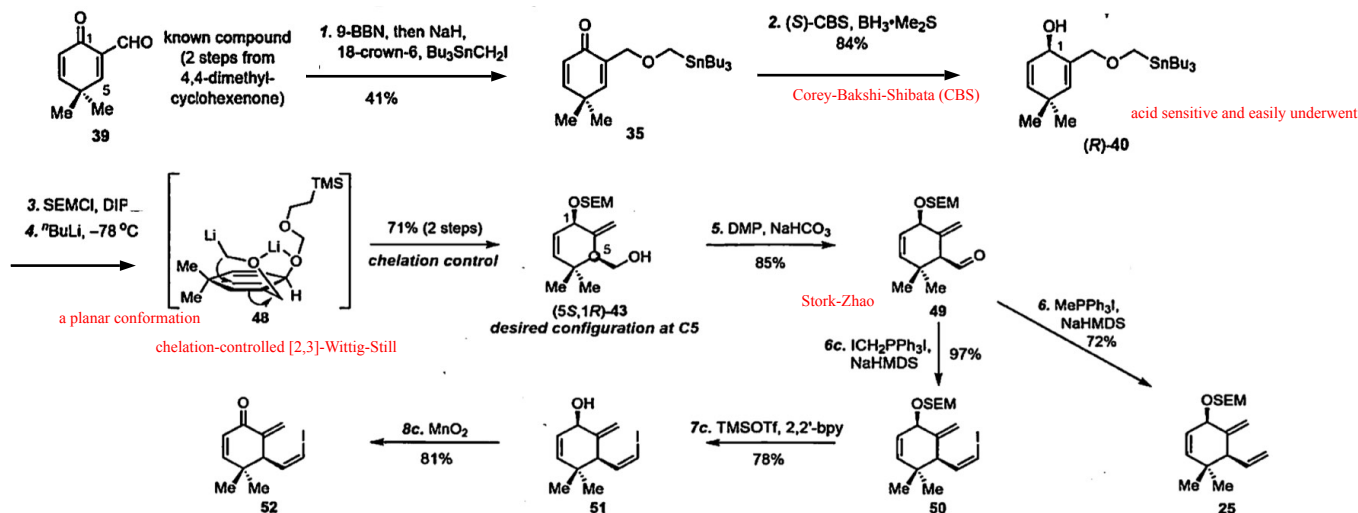


Scheme 3. Syntheses of Eastern Fragments^a

^a essential, silyl enol ether: low ee



Synthesis of Western Fragments



Scheme 7. Completion of the Convergent Synthesis of (-)-Rubrifordilactone B^a

^a removal of the SEM

